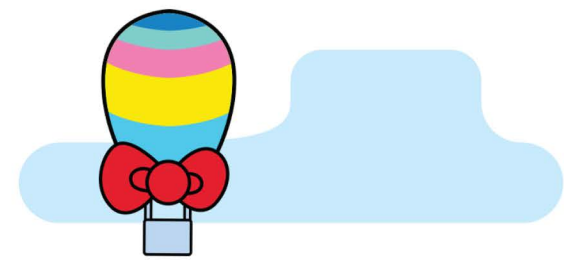
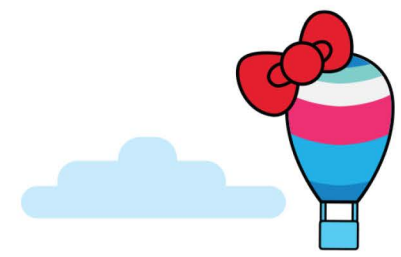
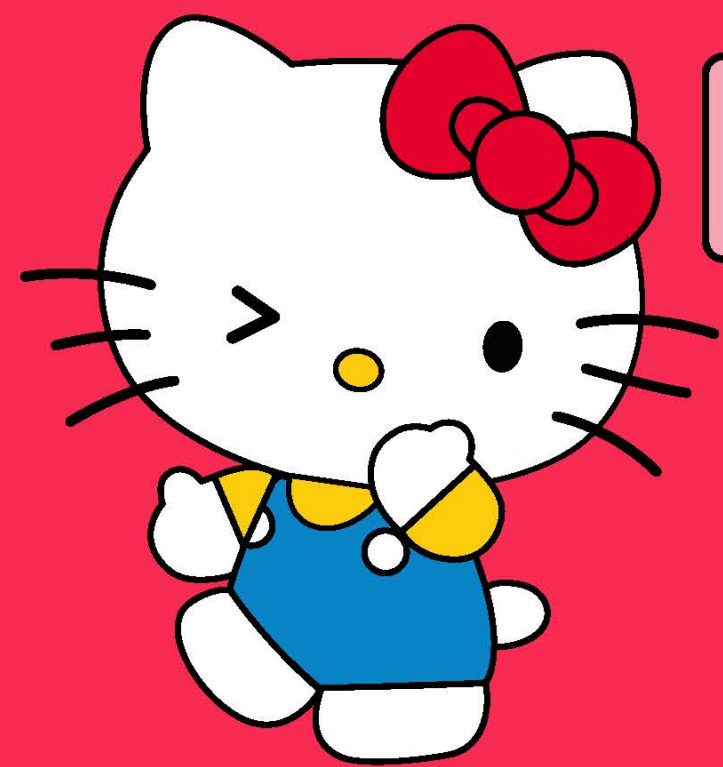


탱글탱글
"Gelly Jelly"





FRUIT FLAVOR BURST
IN EVERY BITE!





GEL101 Shine Muscat



Nutrition Facts

About 2 Serving per container
Serving size 5 piece (20g)

Amount per Serving
Calories 57

	% DV*
Total Fat 0 g	0%
Saturated Fat 0 g	0%
Trans Fat 0 g	
Cholesterol 0 mg	0%
Sodium 10 mg	1%
Total Carbohydrate 14 g	4%
Dietary Fiber 0 g	0%
Total Sugars 9 g	
Includes 9 g Added Sugars	9%
Protein 0 g	
Vitamin D 0 mcg	0%
Calcium 7 mg	1%
Iron 0 mg	0%
Potassium 4 mg	0%

*The % Dairy Value (DV) tells you how much a nutrient in a serving of food contributes to a daily diet. 2,000 calories a day is used for general nutrition advice.

Manufactured in a facility that processes milk, eggs, soy, peanuts, tree nuts, and wheat.

INGREDIENTS:

Corn syrup, Sugar, Glycerin, Mixed fruit juice concentrate (Green grape, White grape, Shine muscat grape), Gellan gum, Less than 2% of: Collagen [Bovine], Glycerol, Water, Medium chain triglycerides [from coconut oil], Cellulose, Artificial and Natural flavors, Monkfruit juice concentrate, Citric acid, Malic acid, Sodium citrate, Calcium lactate, Palm kernel oil, Carnuba wax, Beeswax, Xanthan gum, Locust bean gum, Pectin, Mixed fruit juice extracts (Grapefruit, Orange, Bergamot orange, Mandarin), Ascorbic acid, Lactic acid, FD&C Yellow No.5, FD&C Blue No.1.

Manufactured in a facility that processes milk, eggs, soy, peanuts, tree nuts, and wheat.

PRODUCT OF KOREA



INNER CASE(11.280Z) UPC



8 01015 20256 0

UNIT(1.41OZ) UPC

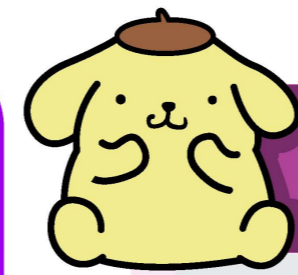


8 01015 20255 3

MASTER CASE UPC



8 02510 11122 1



GEL102 Grape



Nutrition Facts	
About 2 Serving per container	
Serving size 5 piece (20g)	
Amount per Serving	
Calories 58	
	% DV*
Total Fat 0 g	0%
Saturated Fat 0 g	0%
Trans Fat 0 g	
Cholesterol 0 mg	0%
Sodium 10 mg	1%
Total Carbohydrate 14 g	4%
Dietary Fiber 0 g	0%
Total Sugars 8 g	
Includes 8 g Added Sugars	8%
Protein 0 g	
Vitamin D 0 mcg	0%
Calcium 8 mg	1%
Iron 0 mg	0%
Potassium 4 mg	0%

*The % Dairy Value (DV) tells you how much a nutrient in a serving of food contributes to a daily diet. 2,000 calories a day is used for general nutrition advice.

Manufactured in a facility that processes milk, eggs, soy, peanuts, tree nuts, and wheat.

INGREDIENTS:

Corn syrup, Sugar, Red grape juice concentrate, Glycerin, Gellan gum, Less than 2% of: Collagen [Bovine], Glycerol, Water, Medium chain triglycerides [from coconut oil], Cellulose, Citric acid, Malic acid, Artificial and Natural flavors, Sodium citrate, Calcium lactate, Palm kernel oil, Carnauba wax, Beeswax, Xanthan gum, Locust bean gum, Pectin, Mixed fruit juice extracts (Grapefruit, Orange, Bergamot orange, Mandarin), Ascorbic acid, Lactic acid, FD&C Red No.40, FD&C Blue No.1.

Manufactured in a facility that processes milk, eggs, soy, peanuts, tree nuts, and wheat.

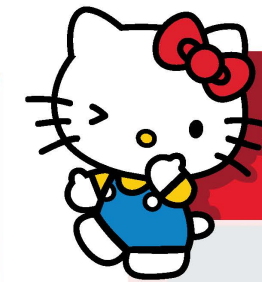
PRODUCT OF KOREA



INNER CASE (11.280Z) UPC: 8 01016 20251 4

UNIT (1.41OZ) UPC: 8 01015 20259 1

MASTER CASE UPC: 8 02 02510 11124 5



GEL103 Strawberry



Nutrition Facts

About 2 Serving per container
Serving size **5 piece (20g)**

Amount per Serving
Calories 58

	% DV*
Total Fat 0 g	0%
Saturated Fat 0 g	0%
Trans Fat 0 g	
Cholesterol 0 mg	0%
Sodium 10 mg	1%
Total Carbohydrate 14 g	4%
Dietary Fiber 0 g	0%
Total Sugars 9 g	
Includes 9 g Added Sugars	9%
Protein 0 g	
Vitamin D 0 mcg	0%
Calcium 6 mg	1%
Iron 0 mg	0%
Potassium 4 mg	0%

*The % Dairy Value (DV) tells you how much a nutrient in a serving of food contributes to a daily diet. 2,000 calories a day is used for general nutrition advice.

Manufactured in a facility that processes milk, eggs, soy, peanuts, tree nuts, and wheat.

INGREDIENTS:

Corn syrup, Sugar, Glycerin, Strawberry juice concentrate, Gellan gum, Less than 2% of: Collagen [Bovine], Glycerol, Water, Medium chain triglycerides [from coconut oil], Cellulose, Citric acid, Malic acid, Sodium citrate, Artificial flavor, Calcium lactate, Palm kernel oil, Carnauba wax, Beeswax, Fruit juice (for color), Beta carotene (for color), Paprika extract (for color), Propylene glycol, mono- and di-glycerides, dl- α -tocopherol, Green tea extract (catechins), Xanthan gum, Locust bean gum, Pectin, Mixed fruit juice extracts (Grapefruit, Orange, Bergamot orange, Mandarin), Ascorbic acid, Lactic acid

Manufactured in a facility that processes milk, eggs, soy, peanuts, tree nuts, and wheat.

PRODUCT OF KOREA



INNER CASE (11.28OZ) UPC



8 01015 20252 2

UNIT (1.41OZ) UPC



8 01015 20251 5

MASTER CASE UPC



8 02 02510 11120 7



GEL104 Peach



Nutrition Facts

About 2 Serving per container
Serving size 5 piece (20g)

Amount per Serving
Calories 60

	% DV*
Total Fat 0 g	0%
Saturated Fat 0 g	0%
Trans Fat 0 g	
Cholesterol 0 mg	0%
Sodium 15 mg	1%
Total Carbohydrate 15 g	5%
Dietary Fiber 0 g	0%
Total Sugars 10 g	
Includes 10 g Added Sugars	10%
Protein 0 g	
Vitamin D 0 mcg	0%
Calcium 7 mg	1%
Iron 0 mg	0%
Potassium 6 mg	0%

*The % Dairy Value (DV) tells you how much a nutrient in a serving of food contributes to a daily diet. 2,000 calories a day is used for general nutrition advice.

Manufactured in a facility that processes milk, eggs, soy, peanuts, tree nuts, and wheat.

INGREDIENTS:

Corn syrup, Sugar, Glycerin, Mixed fruit juice concentrate (Peach, White peach), Gellan gum, Less than 2% of: Collagen [Bovine], Glycerol, Water, Medium chain triglycerides [from coconut oil], Cellulose, Citric acid, Artificial flavor, Trisodium citrate, Calcium lactate, Palm kernel oil, Carnauba wax, Beeswax, Xanthan gum, Locust bean gum, Pectin, Fruit juice (for color), Propylene glycol, Mixed fruit juice extracts (Grapefruit, Orange, Bergamot orange, Mandarin), Ascorbic acid, Lactic acid.

Manufactured in a facility that processes milk, eggs, soy, peanuts, tree nuts, and wheat.

PRODUCT OF KOREA



INNER CASE (11.280Z) UPC



8 01015 20258 4

UNIT (1.41OZ) UPC



8 01015 20257 7

MASTER CASE UPC



8 02 02510 11123 8



GEL105 Lychee



Nutrition Facts

About 2 Serving per container
Serving size 5 piece (20g)

Amount per Serving
Calories 58

	% DV*
Total Fat 0 g	0%
Saturated Fat 0 g	0%
Trans Fat 0 g	0%
Cholesterol 0 mg	0%
Sodium 10 mg	1%
Total Carbohydrate 14 g	4%
Dietary Fiber 0 g	0%
Total Sugars 9 g	
Includes 9g Added Sugars	9%
Protein 0 g	
Vitamin D 0 mcg	0%
Calcium 6 mg	1%
Iron 0 mg	0%
Potassium 3 mg	0%

*The % Dairy Value (DV) tells you how much a nutrient in a serving of food contributes to a daily diet. 2,000 calories a day is used for general nutrition advice.

INGREDIENTS:

Corn syrup, Sugar, Glycerin, Lychee juice concentrate, Gellan gum, Less than 2% of: Collagen [Bovine], Glycerol, Water, Medium chain triglycerides [from coconut oil], Cellulose, Citric acid, Natural and Artificial flavors, Tocopherols, Sodium citrate, Calcium lactate, Palm kernel oil, Carnauba wax, Beeswax, Xanthan gum, Locust bean gum, Pectin, Fruit juice (for color), Propylene glycol, Mixed fruit juice extracts (Grapefruit, Orange, Bergamot orange, Mandarin), Ascorbic acid, Lactic acid.

Manufactured in a facility that processes milk, eggs, soy, peanuts, tree nuts, and wheat.

PRODUCT OF KOREA



INNER CASE(11.28OZ) UPC: 8 01015 20254 6
 UNIT(1.41OZ) UPC: 8 01015 20253 9
 MASTER CASE UPC: 8 02 02510 11121 4

Manufactured in a facility that processes milk, eggs, soy, peanuts, tree nuts, and wheat.



GEL121 Shine Muscat

Multi Bag



Nutrition Facts

1 Serving per container
Serving size 1 bag 0.56 oz (16g)
per Serving
Calories 45

Amount per Serving	% Daily Value*
Total Fat 0 g	0%
Saturated Fat 0 g	0%
Trans Fat 0 g	
Cholesterol 0 mg	0%
Sodium 5 mg	0%

Vitamin D 0mcg 0% • Calcium 6mg 1%
Potassium 4mg 0%

Amount per Serving	% Daily Value*
Total Carbohydrate 11 g	3%
Dietary Fiber 0 g	0%
Total Sugars 7 g	
Includes 7 g Added Sugars	7%
Protein 0 g	

Iron 0 mg 0%

*The % Daily Value (DV) tells you how much a nutrient in a serving of food contributes to a daily diet. 2,000 calories a day is used for general nutrition advice.

INGREDIENTS:

Corn syrup, Sugar, Glycerin, Mixed fruit juice concentrate (Green grape, White grape, Shine muscat grape), Gellan gum, Less than 2% of: Collagen [Bovine], Glycerol, Water, Medium chain triglycerides [from coconut oil], Cellulose, Artificial and Natural flavors, Monkfruit juice concentrate, Citric acid, Malic acid, Sodium citrate, Calcium lactate, Palm kernel oil, Carnauba wax, Beeswax, Xanthan gum, Locust bean gum, Pectin, Mixed fruit juice extracts (Grapefruit, Orange, Bergamot orange, Mandarin), Ascorbic acid, Lactic acid, FD&C Yellow No.5, FD&C Blue No.1.

Manufactured in a facility that processes milk, eggs, soy, peanuts, tree nuts, and wheat.

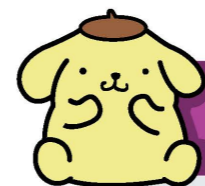
PRODUCT OF KOREA



MULTI BAG (4.5 OZ) UPC



MASTER CASE UPC



GEL122 Grape

Multi Bag



Nutrition Facts

1 Serving per container
Serving size 1 bag 0.56 oz (16g)
per Serving
Calories 45

Amount per Serving	% Daily Value*
Total Fat 0 g	0%
Saturated Fat 0 g	0%
Trans Fat 0 g	
Cholesterol 0 mg	0%
Sodium 10 mg	1%

Vitamin D 0mcg 0% • Calcium 6mg 1%
Potassium 3mg 0%

Amount per Serving	% Daily Value*
Total Carbohydrate 11 g	3%
Dietary Fiber 0 g	0%
Total Sugars 7 g	
Includes 7 g Added Sugars	7%
Protein 0 g	

Iron 0 mg 0%

*The % Daily Value (DV) tells you how much a nutrient in a serving of food contributes to a daily diet. 2,000 calories a day is used for general nutrition advice.

INGREDIENTS:

Corn syrup, Sugar, Red grape juice concentrate, Glycerin, Gellan gum, Less than 2% of: Collagen [Bovine], Glycerol, Water, Medium chain triglycerides [from coconut oil], Cellulose, Citric acid, Malic acid, Artificial and Natural flavors, Sodium citrate, Calcium lactate, Palm kernel oil, Carnauba wax, Beeswax, Xanthan gum, Locust bean gum, Pectin, Mixed fruit juice extracts (Grapefruit, Orange, Bergamot orange, Mandarin), Ascorbic acid, Lactic acid, FD&C Red No.40, FD&C Blue No.1.

Manufactured in a facility that processes milk, eggs, soy, peanuts, tree nuts, and wheat.

PRODUCT OF KOREA



MULTI BAG (4.5 OZ) UPC



MASTER CASE UPC



GEL123 Peach

Multi Bag



Nutrition Facts

1 Serving per container
Serving size 1 bag 0.56 oz (16g)
per Serving
Calories 50

Amount per Serving	% Daily Value*
Total Fat 0 g	0%
Saturated Fat 0 g	0%
Trans Fat 0 g	
Cholesterol 0 mg	0%
Sodium 10 mg	1%

Vitamin D 0mcg 0% • Calcium 5mg 1%
Potassium 5mg 0%

Amount per Serving	% Daily Value*
Total Carbohydrate 12 g	4%
Dietary Fiber 0 g	0%
Total Sugars 8 g	
Includes 8 g Added Sugars	8%
Protein 0 g	

Iron 0 mg 0%

*The % Daily Value (DV) tells you how much a nutrient in a serving of food contributes to a daily diet. 2,000 calories a day is used for general nutrition advice.

INGREDIENTS:

Corn syrup, Sugar, Glycerin, Mixed fruit juice concentrate (Peach, White peach), Gellan gum, Less than 2% of: Collagen [Bovine], Glycerol, Water, Medium chain triglycerides [from coconut oil], Cellulose, Citric acid, Artificial flavor, Trisodium citrate, Calcium lactate, Palm kernel oil, Carnauba wax, Beeswax, Xanthan gum, Locust bean gum, Pectin, Fruit juice (for color), Propylene glycol, Mixed fruit juice extracts (Grapefruit, Orange, Bergamot orange, Mandarin), Ascorbic acid, Lactic acid.

Manufactured in a facility that processes milk, eggs, soy, peanuts, tree nuts, and wheat.

PRODUCT OF KOREA



MULTI BAG (4.5 OZ) UPC



MASTER CASE UPC



“Gelly Jelly”





SAN DIEGO DOWNTOWN

Winter Fancy Faire

January 11-13 2026

Come see us at

Booth # 1212

San Diego Convention Center

EZBEE

Cubee
Cube Up Your Day!

Milk
CLASSIC

Gelly Jelly